



PALLACIA

GOOGLE IMAGE



PROPOSED ELEVATION



INTRODUCTION

Prime Location at Jaipur

Unique High-end apartments

Luxury living

Sprawling clubhouse

24 X 7 Security : Secure Development

Expertise of world class Associates

PROJECT DETAILS

Site Address	A-2 Prithviraj Road, C-Scheme, Jaipur
Total Land Area	20,000 sq m (approx.)
Construction Area	10 Lakh sq ft (approx.)
Building Height	30m
Floors	G+8+ 3basements
No. of blocks	11 (A to K)
Unit Area's	2200 to 9400 Sq Ft
No. of units	152
No of Car parks	735 (approx.)

KEY ASSOCIATES

Principal Architect: **STUDIOS** Architecture, New York

Local architect: **Maithil & Associates**

Landscape Design: **TROP**, Thailand

Structure Design: **Vijay Associates**

MEP: **SPECTRAL**

Construction by: **Shapoorji Pallonji & Co. Ltd**

Project Management Consultants: **Jones Lang LaSalle**

Vaastu Consultant: **Mr Anand Bharadwaj**

EASTERN VIEW



WESTERN VIEW



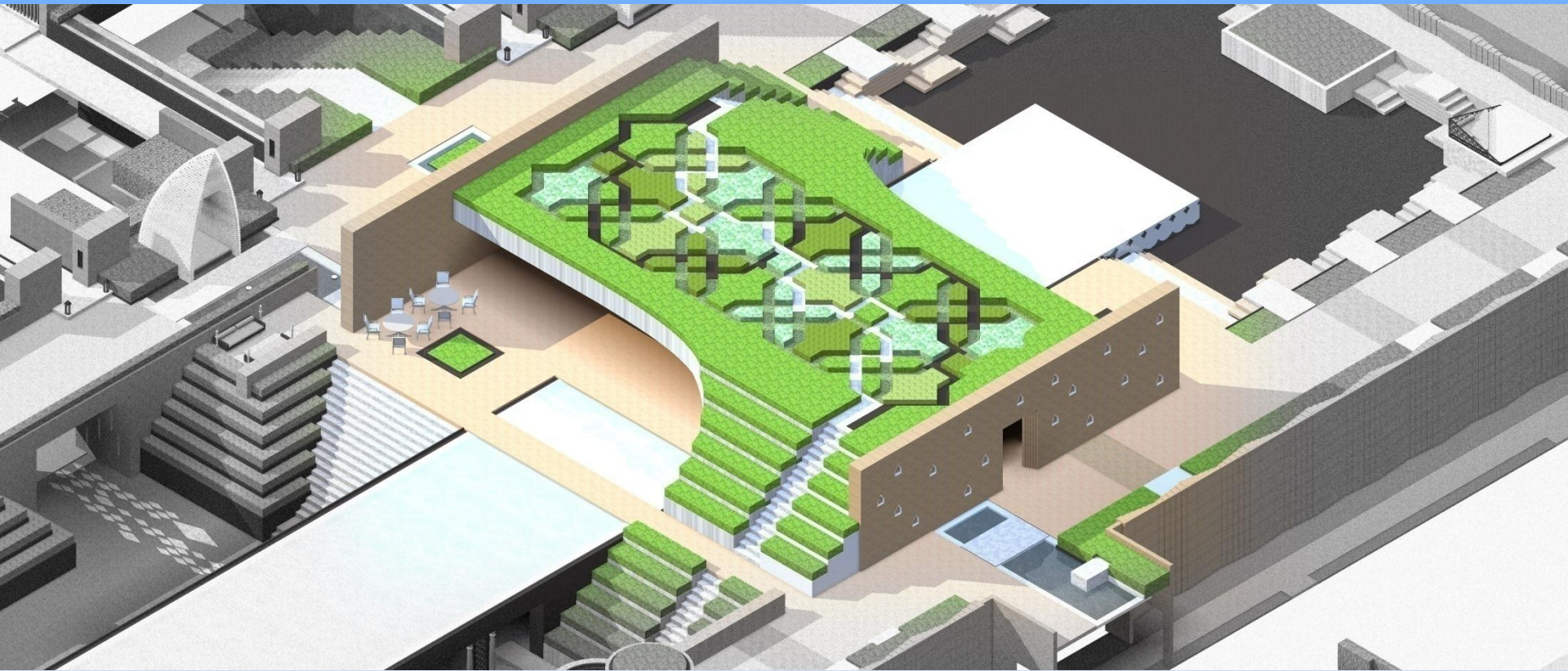
ENTRANCE VIEW



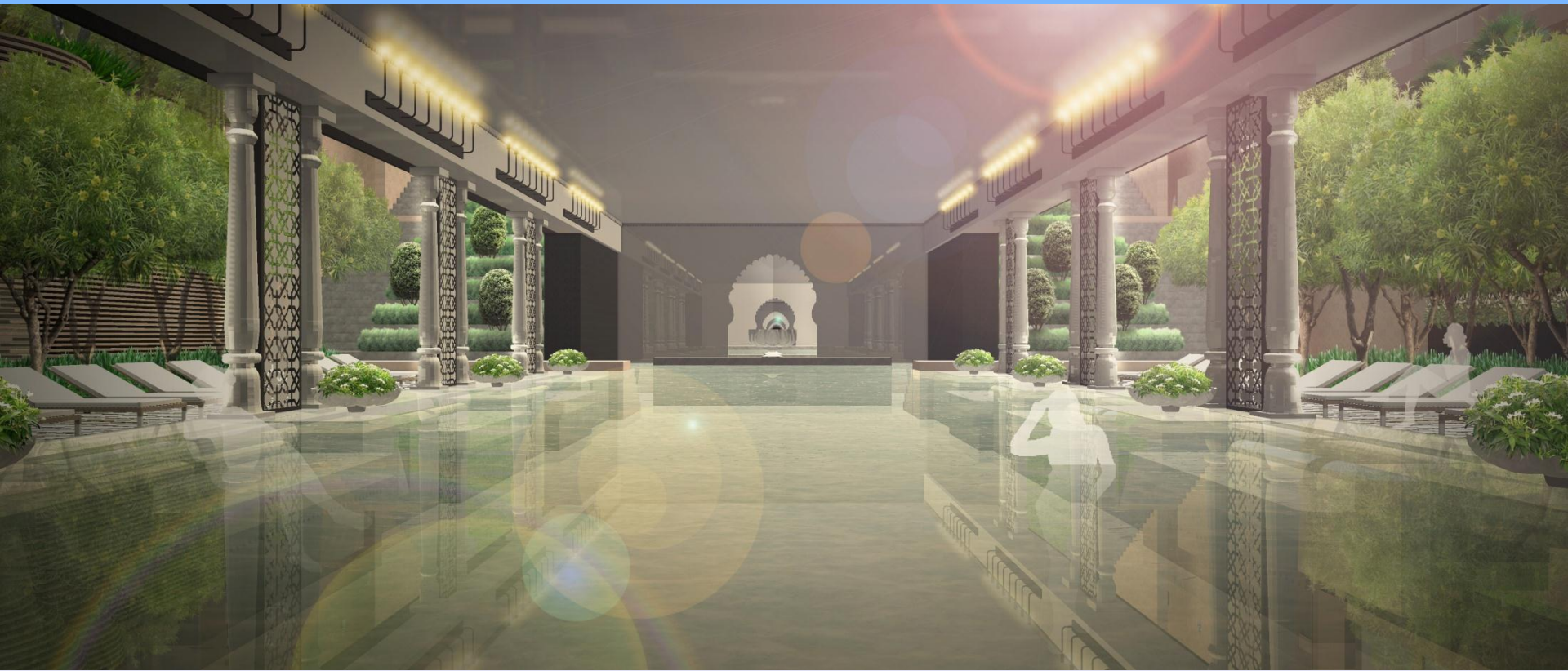
INTERNAL COURTYARD



INTERNAL COURTYARD



SWIMMING POOL



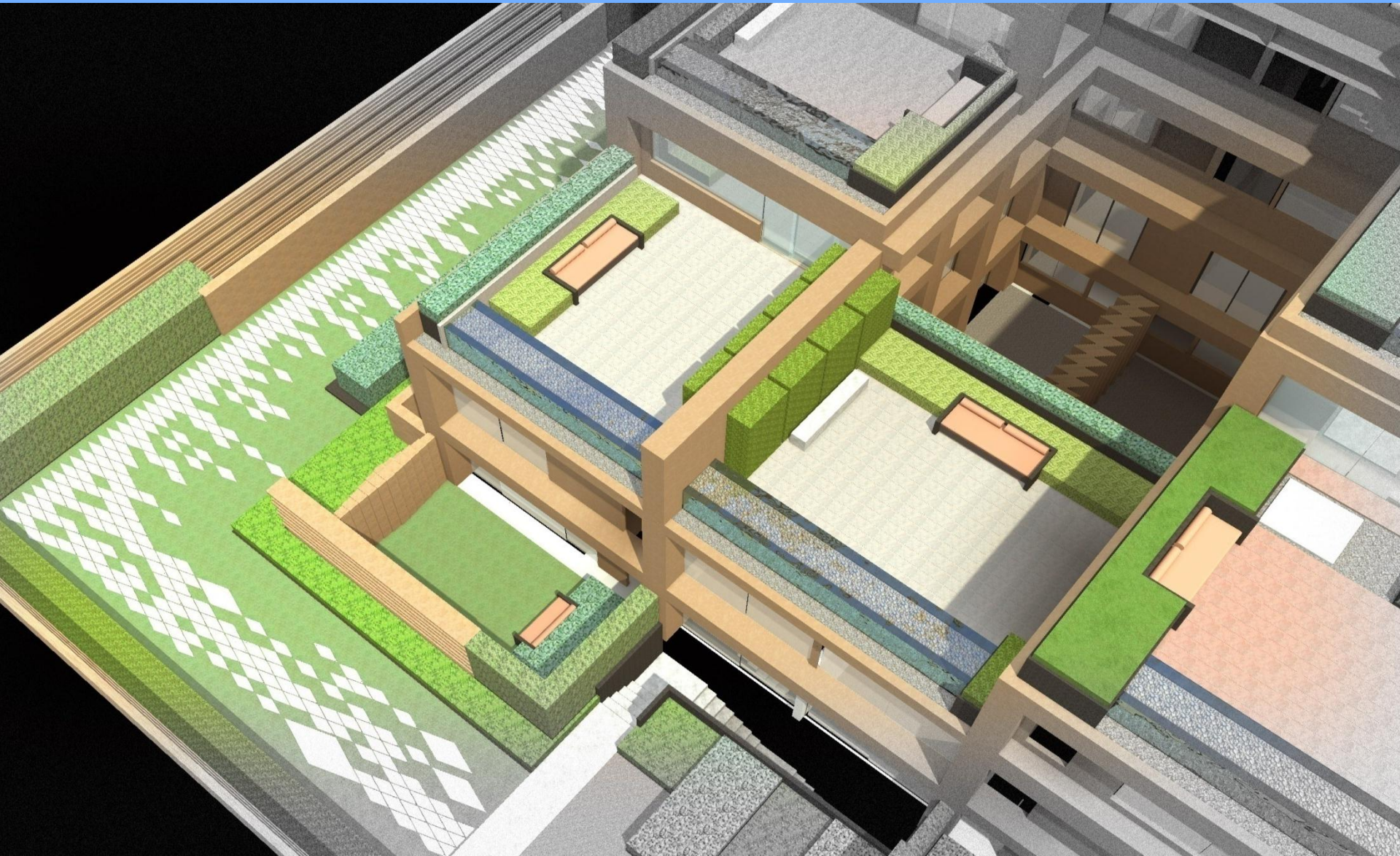
JOGGING TRACK



INTERNAL GARDENS



EASTERN WING TERRACES



EASTERN WING TERRACES



EASTERN WING TERRACES



BIRD EYE VIEW

